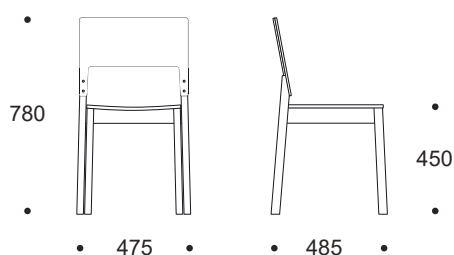


CHAIR 14 WITH LAMINATE

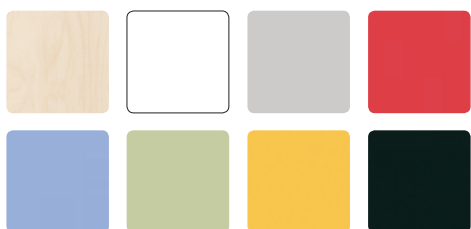
Wooden chair with charmingly simple and contemporary design in both.

Frame of the chair is made from solid birch. Seat and backrest birch plywood, covered with laminate. Finished with a slightly white tone varnish, so the wood tone is naturally light birch. Legs include plastic glides. Chairs are stackable. Weight 5,2 kg.

Chair 14 complies with the standard EN 16139:2013 including correction EN 16139:2013/AC:2013 Furniture. Strength, durability and safety. Requirements for non-domestic seating) level of test severity L1 requirements.



STANDARD LAMINATES



LAMINATE is a surface material which is used on furniture details that demand high resistance. It is possible to choose among birch imitation laminate or colored laminate. Laminate is wearproof, durable to scratches and bumps. Surface is easy to clean. As laminate is sunfast, the colorful appearance of the chair stays changeless for years.

ADDITIONAL OPTIONS

- felt glides

OTHER CHAIRS OF THIS GROUP



Chair 14



Chair 14,
seat upholstered